



迎廣科技股份有限公司

零件承認書

承認書編號： 10D5348

料號	3RAMIS129500	版本	0
品名	28"滾珠滑軌組 川湖,3561-711 430mm機箱	使用機種	---
製造商	川湖	製造商料號	---

Remark :

新產品

零件工程師	陳若安	日期	研發部主管	黃國輝	日期
		2016/08/11			2016/08/12
設計工程師		日期	驗證單位	周文強	日期
		2016/08/12			2016/08/12



APPROVED

KING SLIDE WORKS CO., LTD.

- COMPANY: 迎廣科技股份有限公司
- PART NUMBER: 3561-711EPZZ0BN
/3RAMIS129500
- NAME: Ball BEARING SLIDE ASSY

KING SLIDE WORKS CO., LTD.

ADD:NO.299, SHUN AN RD, LU CHU SHIANG,
KSOHSIUNG HSIEN, TAIWAN R.O.C.

TEL :(07) 6963307

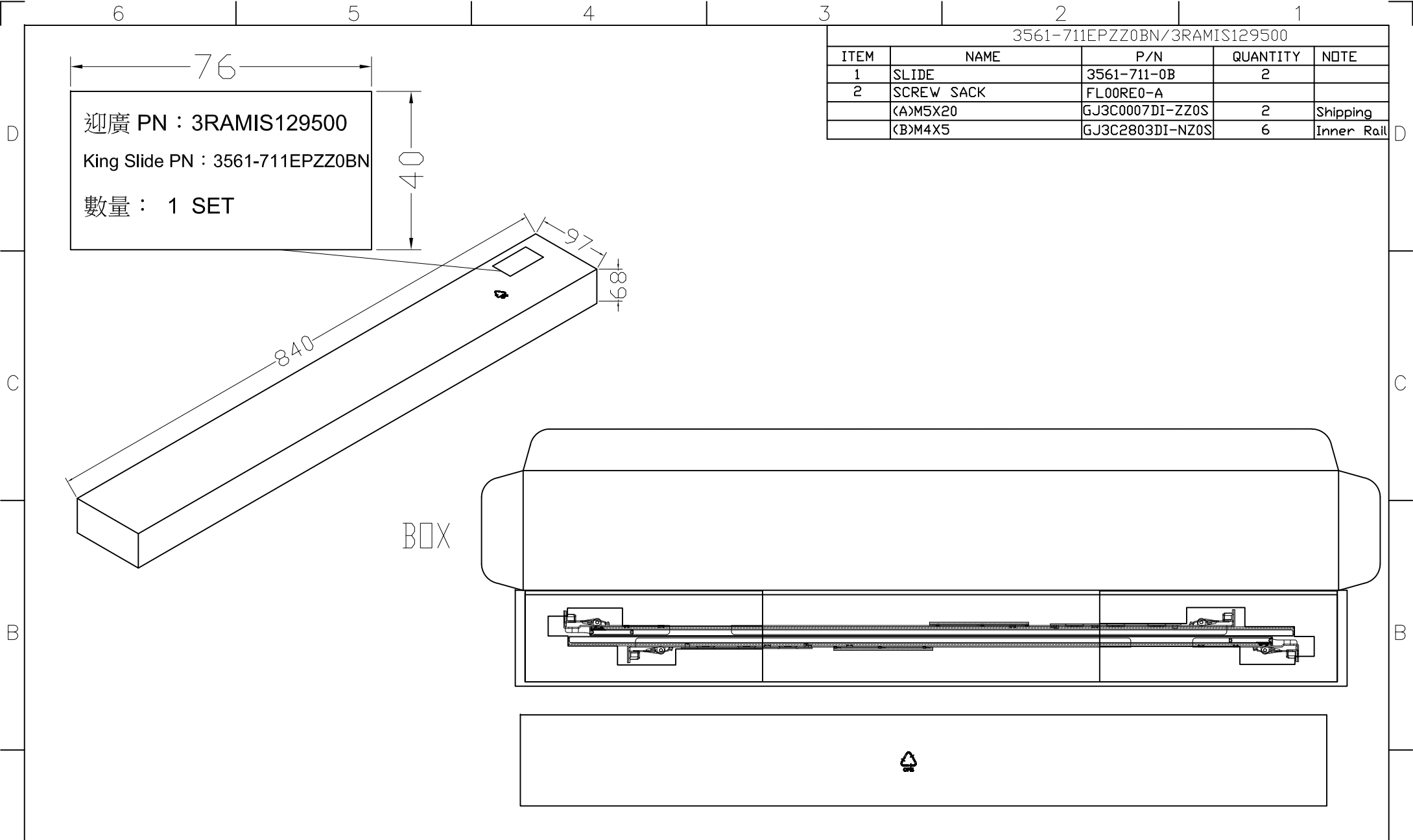
FAX : (07) 6967018

3561-711EPZZ0B3RAMIS129500

ITEM	NAME	NO.	QUANTITY
1	RAIL	3561-711	2 PCS
2	SCREW SACK	FL00RE0-A	1/BAG
	M5*20	GJ3C0007DI-ZZ0S	2 PCS
	M4*5	GJ3C2803DI-NZ0S	6 PCS

I N D E X

PACKING ILLUSTRATION.....	4-5
FAI REPORT.....	6-11
3561-711EPZZ0BN.....	6-7
GJ3C0007DI-ZZ0S.....	8-9
GJ3C2803DI-NZ0S.....	10-11
TEST REPORT.....	12-16
鹽霧測試.....	12-14
壽命測試	15-16



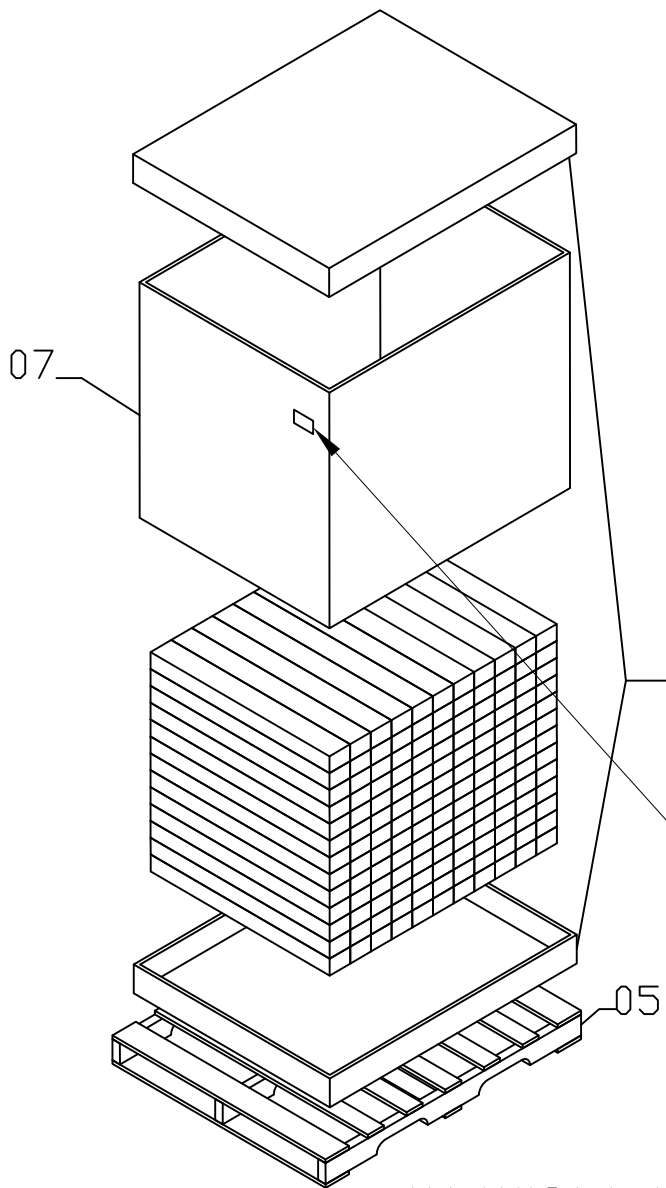
3561-711EPZZ0BN/3RAMIS129500				
ITEM	NAME	P/N	QUANTITY	NOTE
1	SLIDE	3561-711-0B	2	
2	SCREW SACK	FL00RE0-A		
	<A>M5X20	GJ3C0007DI-ZZ0S	2	Shipping
	M4X5	GJ3C2803DI-NZ0S	6	Inner Rail

△			原材硬度	材 質	模具編號	日 期	比 例 /	圖紙A4
△			熱處理	材 規	設計者	曹仁卉	2016.04.19	UNIT : mm
△			處理硬度	耗料長	製圖者	曹仁卉	2016.04.19	
	變 更 紀 錄	更改者	變更日期	表面處理	顏 色	審核者		

	King Slide WORKS CO., LTD 川湖科技股份有限公司	
圖別 △	零件名稱	3561-711 包裝示意圖(迎廣)
零件編號	3561-711EPZZ0BN	版本 V1-00
檔案編號	N:\OUTPART\WRAPPING	
	頁數	1 OF 2

3561-711EPZZ0BN/3RAMIS129500 包材一覽表

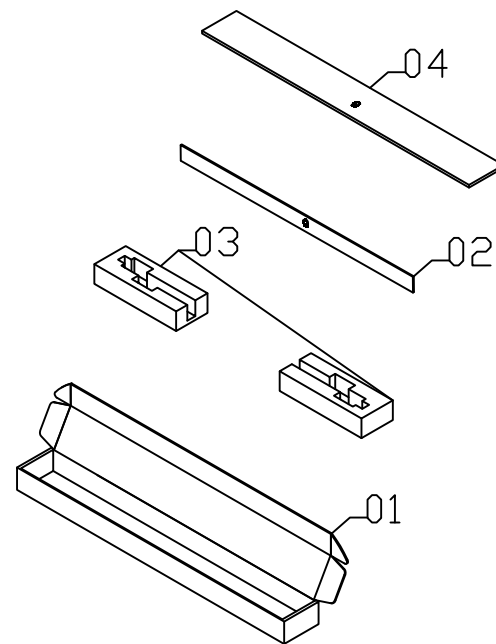
項次	品名	零件編號	數量/組	材規(LxWxH)	耗料長	材質	模具編號
01	紙箱	IA1RCC518351-C	1	840X97X68		3P紙	
02	中間隔板	IA5RCH313351-C	1	715X40		3P紙	
03	左右邊共用泡棉	IL1BSD2743A1-Z	2	240X92X50		EPE	
04	上隔板	IA5RAH312351-C	1	805X90		5P紙	
05	棧板	IB3TAA3523R6-Z	1/143	1.5x99x119x11.5cm		柳安雜木、北美杉木	
06	大外箱上下蓋	IA4RAC5013B1-Z	2/143			5P紙	
07	大外箱中間部分	IA4RAC5013B1-Z	1/143	內徑130x875x950		雙層5P紙	



76

40

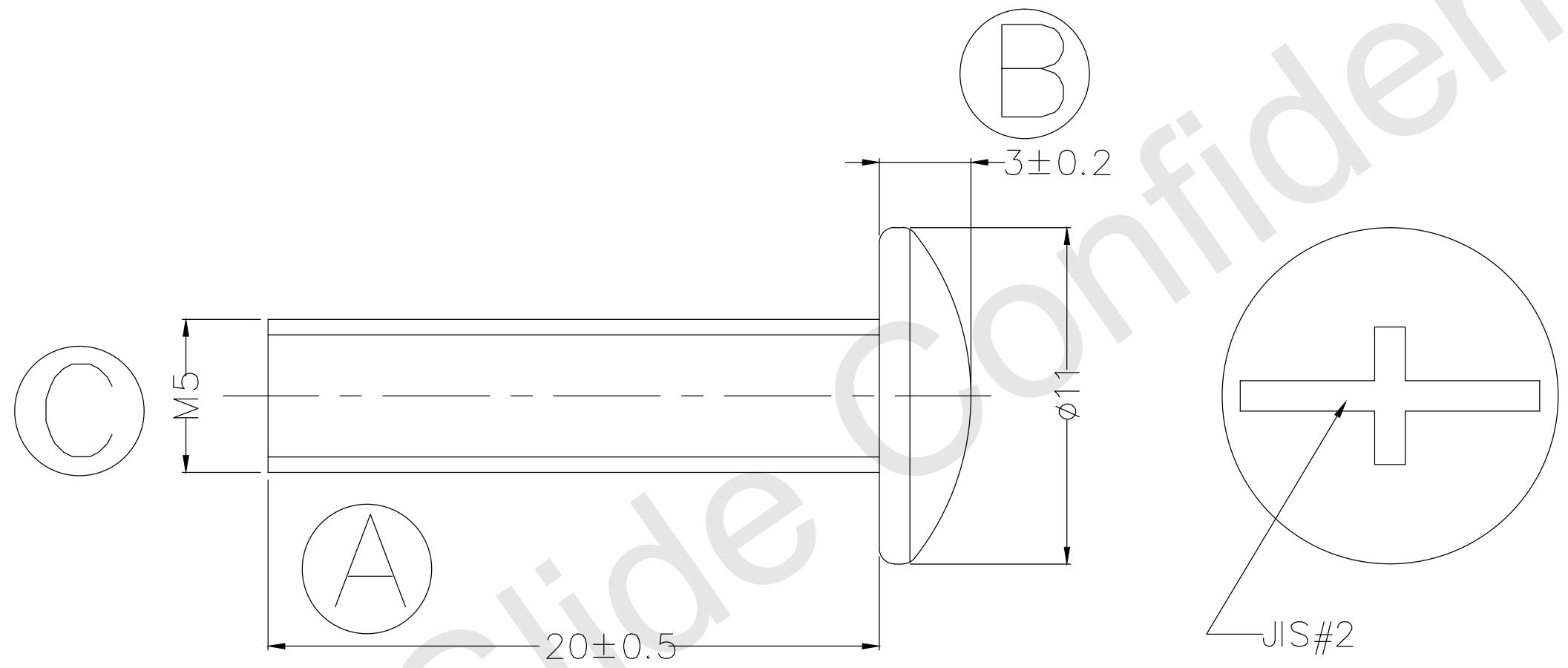
迎廣 PN : 3RAMIS129500
King Slide PN : 3561-711EPZZ0BN
數量 : 143 SETS



11(箱)X13(層)=143(箱)

△			原材硬度	材 質	模具編號	日 期	比例 /	圖紙A4	King Slide WORKS CO., LTD 川湖科技股份有限公司 圖別 △ 零件名稱 3561-711 包裝示意圖(迎廣) 零件編號 3561-711EPZZ0BJ 版本 V1-00 檔案編號 N:\OUTPART\WRAPPING 頁數 2 OF 2
△			熱處理	材 規	設計者 曹仁卉	2016.04.14	UNIT : mm 		
△			處理硬度	耗料長	製圖者 曹仁卉	2016.04.14			
變 更 紀 錄			表面處理	顏 色	審核者				

Confidential Information

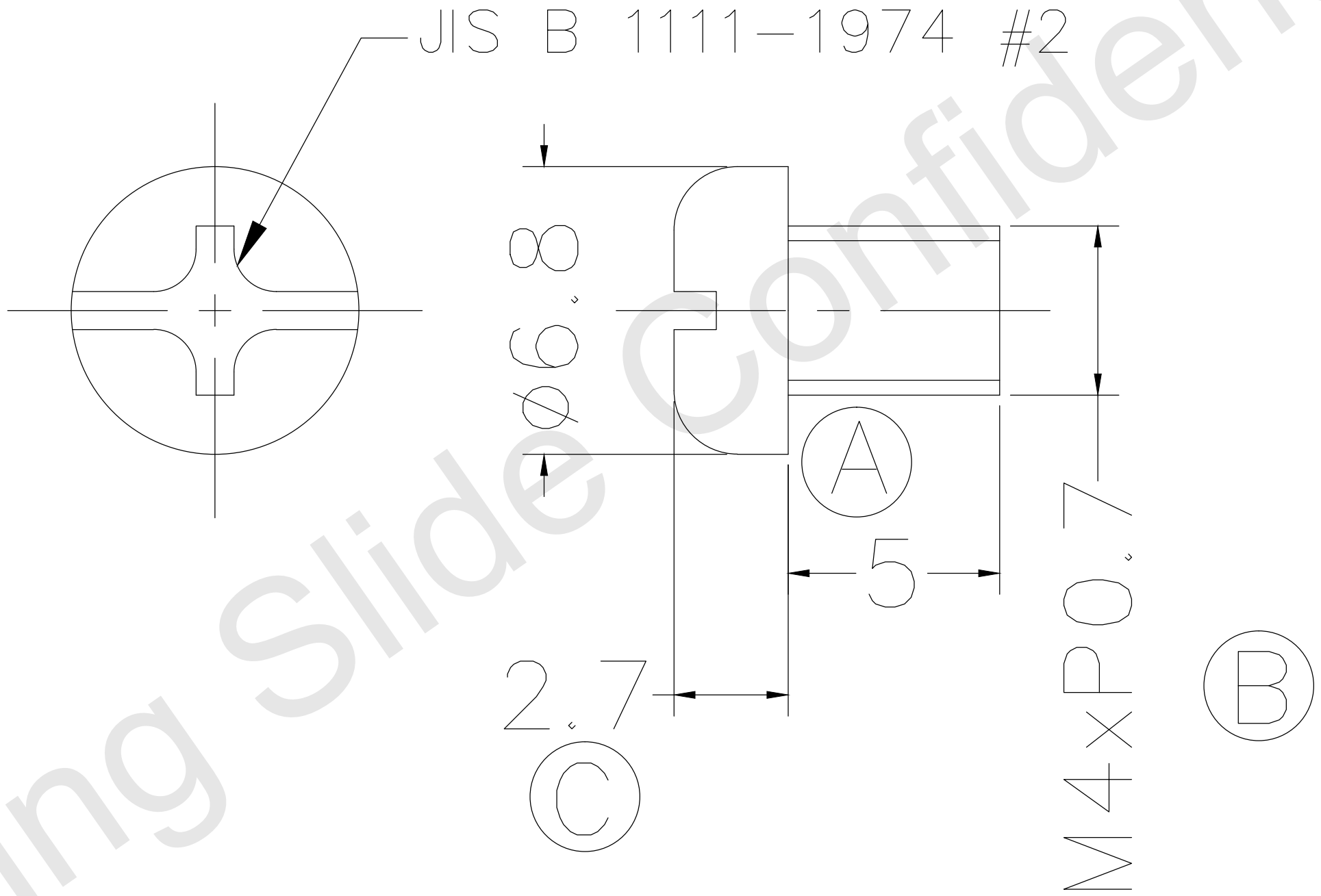


Note:

- 1. RoHS COMPLIANT.
- 2. GENERAL TOLERANCE ± 0.3

PART NO.	GJ3C0007DI-ZZ0S	DESIGN	Jay HO	CHECK	YSH	UNIT	mm	DESCRIPTION		HEAT TREATMENT									
SPECIFICATION	M5x20(P0.8)	DRAWING	Jay HO	DATE	20150225	SCALE		FINISH	ZINC PLATED	MATERIAL	Carbon Steel								
KING SLIDE WORKS CO., LTD.										HARDNESS									
										REVERSION	V1-00	PART NUMBER	CUSTOMER ITEM NO	COLOR		CHANGE REVISION		CHANGER	DATE

Confidential Information



Note:

1. RoHS COMPLIANT.

2. GENERAL TOLERANCE ± 0.3

PART NO.	GJ3C2803DI-NZ0S	DESIGN	Jay HO	CHECK	YSH	UNIT	mm	DESCRIPTION		HEAT TREATMENT									
SPECIFICATION	M4x5(P0.7)	DRAWING	Jay HO	DATE	20150319	SCALE		FINISH	ZINC PLATED	MATERIAL	Carbon Steel								
KING SLIDE WORKS CO., LTD.										HARDNESS									
										REVERSION	V1-00	PART NUMBER	CUSTOMER	ITEM NO	COLOR		CHANGE REVISION		CHANGER

KING SLIDE WORKS CO., LTD. TEST REPORT

Date: 4-Aug-2016

Serial numbers : 2016TR0481

1. Introduction

Environment: Temp: 20°C± 3°C, Humidity: 65%~75%

Machine Type: Salt Spray testing machine

Customer: 迎廣

Sample name: 3561-711

Sample condition: New

Conclusion: **PASS**

Review: Huang. Sung

Prepared by: Wolf. Wang

KING SLIDE WORKS CO., LTD.

TEST REPORT

Date: 4-Aug-2016

Serial numbers : 2016TR0481

Section 1: Salt Spray Test

Sodium chloride concentration : 5 ± 1 parts by mass of sodium chloride in 95 parts of water

Air Pressure: 1 kgf /cm²

Degree of Salt bucket: 35°C

Gravity of salt solution collected: 1.03

Volume of salt solution collected for each 80 cm² of horizontal sampling area: 1.3ml/Hr.

Temperature of Lab Room: 34°C

Pure Water PH: 6.8

Temperature of Pressure bucket: 47°C

Standard : According to CNS8886 Surface treatment salt spray test standard. (Level 9)

The test does not include working and cutting edges. And the result could be only applied to slides before used.

KING SLIDE WORKS CO., LTD. TEST REPORT

Date: 4-Aug-2016

Serial numbers : 2016TR0481

Results:

Test Sample	Test Time
sample	24 Hours 無紅繡

◆ The sample meets the acceptance level criteria.



KING SLIDE WORKS CO., LTD.

TEST REPORT

Date:4-Aug-2016

Serial numbers : 2016TR0482

1. Introduction

Standard:

Environment: Temp: 28°C ± 3°C, Humidity: 50%~60%

Machine Type: Rail slide testing machine

Customer: 迎廣

Kingslide Sample Description: 3561-711

Slide Profile:

Length: 711mm Travel length:555mm

Profile: Height 35mm x 9.7mm

Sample condition: New product

WORK REQUESTED/APPLICABLE DOCUMENTS:

Test Description	Results
Cycle test	PASS

Conclusion:**PASS**

Review: Huang.Sung

Prepared by: wolf.wang



TEST REPORT

Date:4-Aug-2016

Serial numbers : 2016TR0482

Section 1: Life Cycle Test

Test setup:

1. Chassis's size: D : 600mm W : 430 mm H:88mm
2. Service weight: 35 kg
3. Chassis's weight: 9.5kg
4. Rack Depth:29" Square hole
5. Cycle time: 1000

Test Apparatus: Testing should be performed on a rigid fixture capable of releasing slide lock-outs to perform true operational testing (Defeating lockouts is not considered a full system test).

Test Procedure: Product is to be fully extended from a fully retracted position in the rack or apparatus until the slides lock (if applicable), then retracted after the lock releases (if applicable) have been activated. Cycle speed should be moderate, in the range of 5 to 10 seconds for a full cycle.

Pass Criteria: Testing should be performed on a rigid fixture capable of releasing slide lock-outs to perform true operational testing (Defeating lockouts is not considered a full system test).

Results:

- ◆ The sample meets the acceptance level criteria.